



Pro-care Auto Bariatric

Alternating Pressure Redistribution System

- Suitable for patients in high to very high risk of pressure injuries
- Total dynamic in Cell-on-Cell air cells for enhanced comfort and stable support
- Alternating Low Pressure mode for an even higher comfort level to patients
- Deliberately crafted dual compressors system silently and continuously care for patients

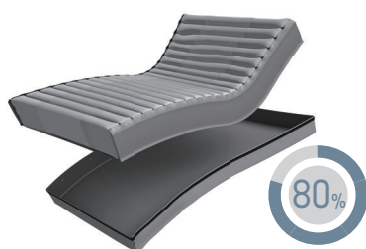




Pro-care Auto Bariatric

Alternating Pressure Redistribution System

"Pro-care, perfectly comfortable"



80% of Time Saving

During decontamination, air cells with quick release detachable base can be easily removed from mattress



Non-Slip PU Base

Prevents mattress from slipping out the bed



Max Patient Weight

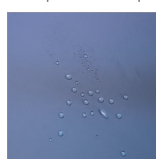
Newly designed mattress system can offer high comfort and stability to patient weighs up to 450 kg

Micro Low Air Loss

Provide good ventilation and help reduce the accumulation of heat and moisture

4-way Stretch Cover

Reduced shear and low friction that further aids in pressure injury prevention. It's with welded seams that can prevent liquid from ingress into the mattress



- Low friction and shear
- Highly vapour permeable
- Water resistant
- High-flame retardant



4-Way Stretch



Vapour Permeable



Flame Retardant



Water Resistance



Waterproof Gadget

Preventing liquid from infiltrating inside of the mattress during decontamination

Built for Professionals

Pro-care Auto Bariatric is designed to meet the clinical needs in healthcare facilities to aid in pressure care plan while improving patient's comfort level, this simple and durable system helps medical professionals to remain to be highly efficient even during their challenging daily tasks.

Soft & Comfort Air Cells

A perfect selection of materials to increase comfort level for patient and reduce the noise when patient's moving on the mattress

Heel Relief Function

Heel relief function at the last 5 air cells to prevent pressure injury from occurring on patient's heels

Quiet Pump

Lower vibration from pump to enhance the better quality of patient care (<20 dBA)

A longer Lasting System Thanks to Dual Compressors

Having the capability of not only shortening mattress preparation time but also extending period of use

Graphic Design on The Panel

Easy-to-read display for a faster set-up

Quick Connector

Once with cap on, instantly switch to static air mattress for transportation need (12 hours)



Auto Adjustment

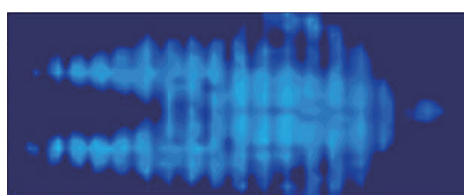
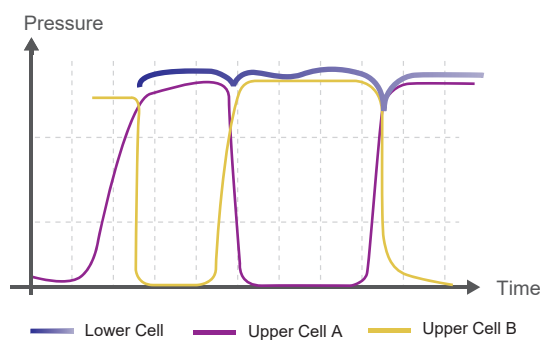
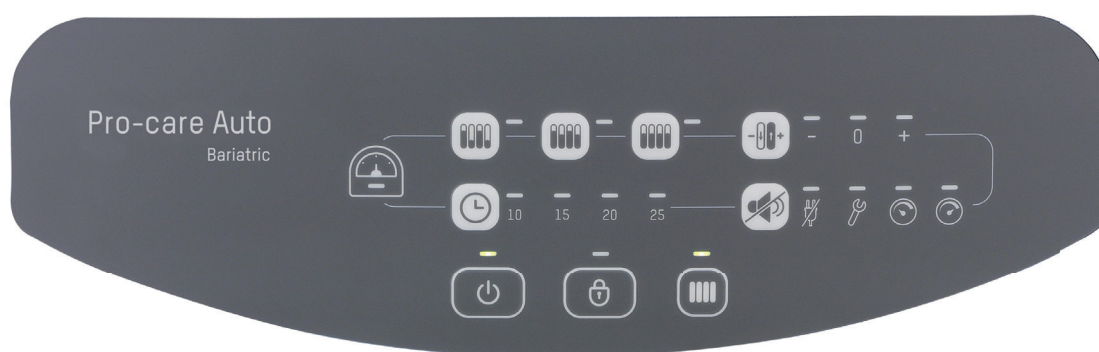
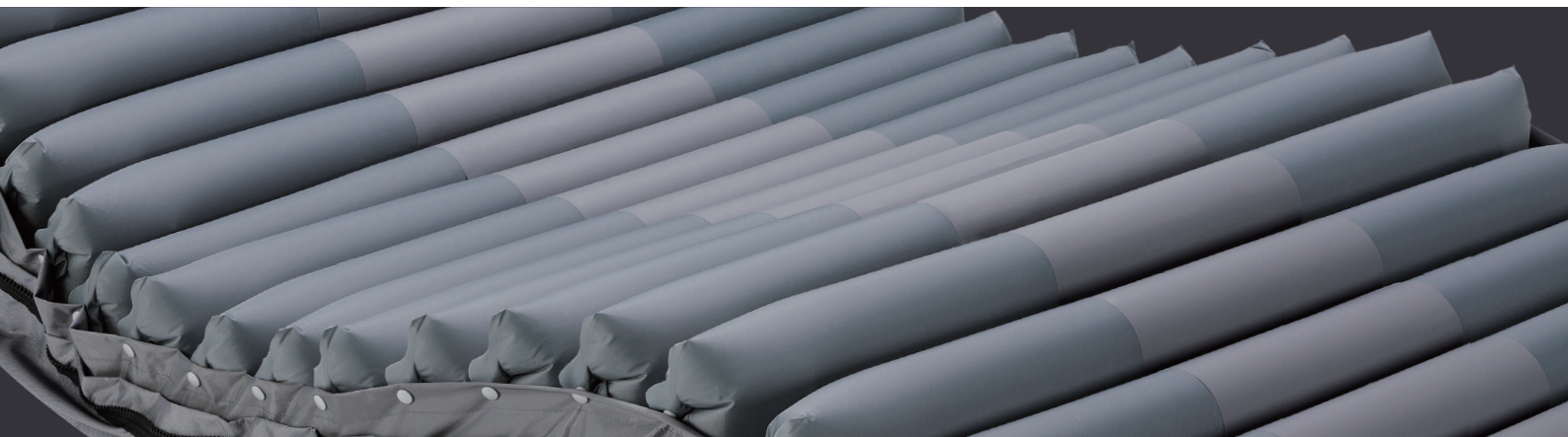
Automatically provides an optimal pressure based on the patient's weight and position



Tuning Function

To fine-tune the pressure & optimize patient's comfort





Pressure mapping under Alternating Low Pressure mode

Total Dynamic

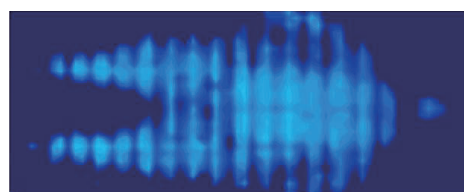
Dynamic pressure change also in the bottom of Cell-on-Cell air cells while being able to prevent patient from bottoming out during power failure for 8 hours

Alternating Low Pressure, A Mild Alternating

Newly designed function delivers moderate alternation for sensitive patients who seek a **greater comfort experience**

Four Cycle Time Options

Alternating and Alternating Low Pressure therapy can be set at 10, 15, 20 or 25 minutes cycle based on caregiver's clinical assessment and care plan



Pressure mapping under Alternating mode

Specifications

Model	Pro-care Auto Bariatric	
Pump	Dimensions	34 x 13.5 x 20.5 cm
	Weight	3.8 Kg
	Case Material	Flame retardant ABS
	Supply Voltage	AC 220 - 240V , 50Hz
	Operating Cycle	10, 15, 20, 25 mins
Mattress	Bariatric 8" Replacement	
	Dimensions	200 x 107/122 x 20 cm
	Cell Height	20 x 8" cells (Cell - on - Cell)
	Weight	13 kg
	Cover Material	4-way stretch PU / Polyester cover, Nylon PU quilted cover (Optional)
	Cell Material	Nylon PU
	Maximum Patient Weight	450 kg
	Flame Retardant Standards	EN 597-1/597-2

Specifications are subject to change for improvement without notice



HEADQUARTERS

Wellell Inc.

No. 9, Minsheng St., Tucheng Dist.,
New Taipei City 236044, Taiwan
T +886 2 2268 5568
F +886 2 2268 6525
marketing@wellell.com

PAN-ASIA

CHINA

Wellell (Kunshan)Co., Ltd.
No. 1368, ZiZhu Road, Kunshan,
Jiang Su Province, China
T +86 512 8617 1660 Ext 1150
F +86 512 8617 8663
customer.cn@wellell.com

THAILAND

Apex Medical (Thailand)
No.111/152 Soi Pho Kao Yak 19,
Nawamin, Beung Kum,
Bangkok 10240,
Thailand.
T +66 02 018 2140
sales.thai@wellell.com

PAN-EUROPE

SPAIN

Apex Medical S.L.
Elcano 9, 6ª planta 48008
Bilbao. Vizcaya. Spain
T +34 94 4706408
F +34 94 4706409
info@apexmedical.es

UK

Wellell UK Limited
Unit 33, Great Western Business Park
McKenzie Way, Worcester ,WR4 9GN
United Kingdom
T +44 (0) 190 5774 695
sales.uk@wellell.com

FRANCE

Wellell France S.A.S
4 Boulevard de la Chanterie
49124 Saint-Barthelemy d' Anjou
France
T +33 2 72 79 27 13
F +33 2 85 73 07 67
info.france@wellell.com

GERMANY

SLK Vertriebsgesellschaft mbH
Am Herdicksbach 18, 45731 Waltrop
Germany
T +49 (0) 231-925360-0
F +49 (0) 231-925360-29
info@slk-gmbh.de
www.slk-gmbh.de

AMERICAS

USA

Wellell America Corp.
927 Mariner Street,
Brea, CA 92821, USA
T +1 714 671 3818
F +1 714 494 8173
sales.usa@wellell.com

Distributed by